



WESS

Building our Future

November 2021



Welcome to the WESS expanded campus! The WESS master plan development is now a reality and 2022 will see everyone able to enjoy the spaces!

As the 2021 school year draws to a close, I am very excited to imagine the wonderful new year that awaits WESS now that the building project has reached its full completion. In 2022, all WESS staff and students will enjoy full use of the facilities, with the addition of:

- M Block—Years 5 & 6 classrooms, P&C office and uniform shop
- N Block—an additional library, Student Services and staffroom
- O Block—Performing Arts Centre (PAC), music rooms, and tuckshop

Holiday construction

On the first week of the holidays, the demountables at the front and east side of the administration building will be removed and works will begin to rejuvenate the tennis courts and landscape the front entrance to the school.

2022

We predict we will start 2022 with 1,300 students in 54 classes—an increase of approximately 80 students compared to our 2021 Day 8 enrolment data.

To ensure we are appropriately resourced to deliver high-quality education services, improve student learning outcomes and manage school operations, it is important that families advise the office as soon as possible if circumstances change over the holiday break and your child is unable to return to school on Monday, 24 January. The school office closes on Friday, 10 December and reopens on Monday, 17 January.

Finding out the classes and teachers

On Friday, 21 January, parents and carers will receive an email from their child's new class teacher. This email will introduce the teacher, the class name and it will also indicate the classroom and where the teacher will meet them on their first day of school.

In 2022, year levels will be located in the following blocks (see location map):

- L Block—Prep and Year 1
- J Block—Year 2
- F, G, K Blocks—Years 3 & 4
- M Block—Years 5 & 6



Year 5 students and Acting Principal Penny Couch in front of M Block

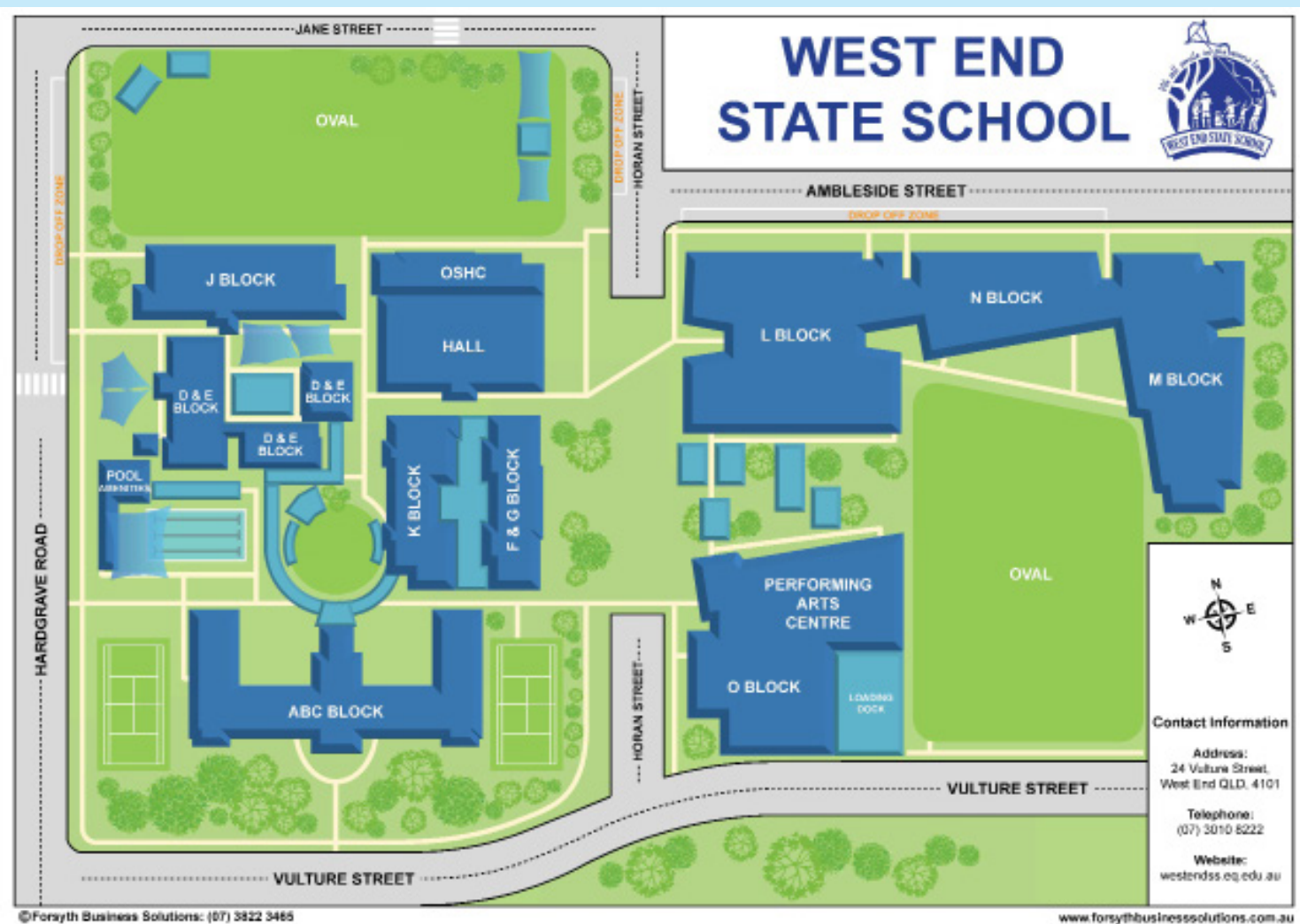


Thank you and happy holidays

I would like to wish each and every one of you a lovely break. Stay safe and all staff will look forward to welcoming you back on Monday, 24 January 2022.

Penny Couch, WESS Acting Principal

WESS 2022 School Map



Location key

- ABC Block—Administration office, specialist classrooms, staffroom
- D & E Block—HPE teachers, OSHC, specialist classrooms
- F & G Block—Years 3 & 4 classrooms
- J Block—Year 2 classrooms
- K Block—Library, Years 3 & 4 classrooms
- L Block—Prep & Year 1 classrooms
- M Block—P&C office, uniform shop, Years 5 & 6 classrooms
- N Block—Library, Student Services, staffroom
- O Block—Performing Arts Centre (PAC), music rooms, tuckshop

Artist Impressions L, M, N & O Blocks



If you have any questions regarding the construction, please email the project team at BuildingFutureSchools@qed.qld.gov.au

A picture says a thousand words... Year 5 tours



From M Block overlooking the new oval & Campus Heart



From M Block overlooking the soft play area



First level of M Block, outside the P&C office

Administration and Student Services

In 2022, WESS will have 2 office spaces within the campus—the **Administration** office within B Block (the main entrance on Vulture Street), and the **Student Services** office within N Block (entrance off Ambleside St). The new Student Services office will be a student support hub and the key point for all internal student and staff enquiries during the day.

The Administration office will be the main point of call for parents, carers, and the wider community when accessing the school and for any enquiries.

Administration Office (B Block)—access via Vulture St

Open from 8.00am to 3.30pm—Monday to Friday

- Enrolment enquiries and interviews
- Parent payments
- Late slips (both offices)
- Visitor sign in
- Parents collecting early or dropping off late
- Short term first aid for students
- Administering of medication
- Collection of students from first aid if they are going home

Student Services (N Block)—access via Ambleside St

Open from 8.25am to 3.00pm—Monday to Friday

- Late slips (both offices)
- Parents dropping off late
- Staff and Student announcements
- Short term first aid for students (Collection from Admin Office if going home)
- Administering of medication
- Drop off mobile phone for safe keeping during the day

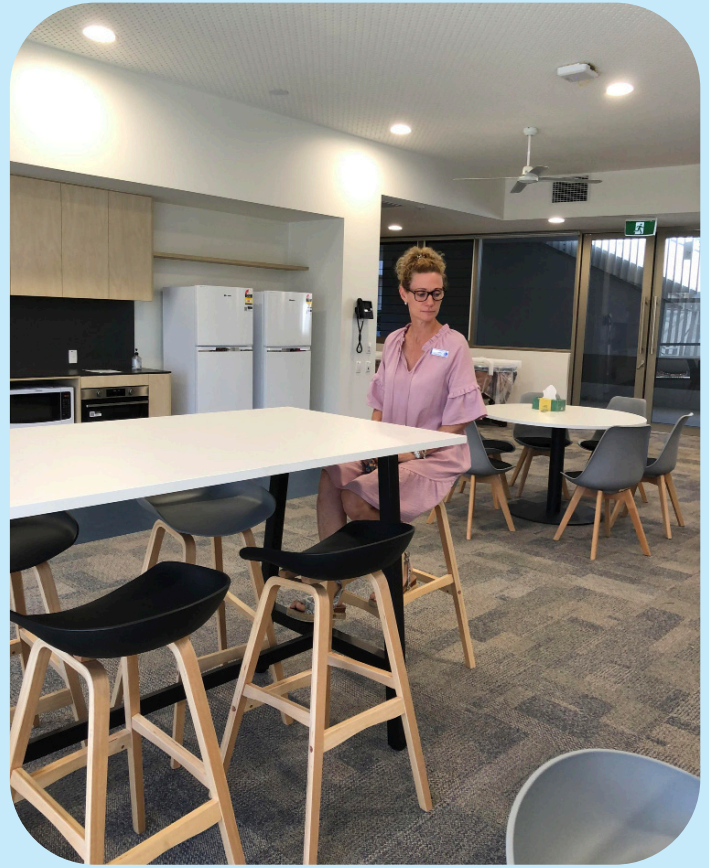


Year 5 students on the entry to N Block

N Block (Student Services, staffroom, & library)



Ms Carr & Ms Couch in the new Student Services office



Business Manager Kylie Jones in the new staffroom



Year 5 students checking out the new library



Year 5 visit the new N Block library



Year 5 student, Victor, testing the library egg chair



Year 5 student, Nicola, checking the stacks



Year 5 students, Nicola & Amelia, testing the new library



Year 5 students, Akshay & Victor, finding the new library furniture

Week 1 procedures

Drop Off and Pick Up Processes –Term 1 2022

Drop Off – 24th – 25th January (first 2 days back at school)		
Students will meet their class teacher:		
Year Level	Time	Place
Years 5 – 6	8:30am	Under M Block
Years 3 – 4	8:30am	School Oval Year 3 – YELLOW shed Year 4 – RED shed
Year 2	8:45am	School Oval – BLUE shed
Year 1	8:45am	Hall
Prep	9:00am	Under L Block and then 1 parent / carer can accompany their child up to their classroom
Drop Off – From Thursday 27th January		
Year Level	Time	Place
Years 2 – 6	From 8:15am	Students may access the school grounds via the following entry points (See map) <ul style="list-style-type: none"> Jane St – Oval gate Vulture St – front gate (Administration building) Vulture St – Oval gate (Performing Arts Centre) Horan St – OSHC entrance Hardgrave Rd – pool gate Hardgrave Road – oval gate + Drop Off/Pick up Zone (2 minutes) Ambleside St – L Block and M Block gates <p>Students in Years 5 – 6 to wait under M Block until the bell Students in Years 2 – 4 to wait in Dirram Yani until the bell</p>
Prep – Year 1	From 8:15am	Access the school grounds via the gate located on Ambleside St – under L Block Students will be met by staff members and directed to their classrooms (Prep – Term 1) and/or the undercroft area <i>NB – Prep/Year 1 students accompanied by siblings or older students may choose to enter through alternative gates and older siblings of Prep/Year 1 students may use the L Block gate if they are accompanying younger siblings.</i>
Pick Up Processes - 2022		
Year Level	Time	Place
Years 3-6	2:45pm	Dirram Yani or independent departure
Year 1 – 2	3:00pm	Parents/carers/siblings meet students on school oval <ul style="list-style-type: none"> Year 1 – BLUE shed Year 2 – RED shed
Prep	3:00pm	Parents/carers/siblings meet students under L Block

Day 1 Tears & Tissues

We all know the wrench the first day of school can be (especially for parents and carers), so the P&C hosts a Tears & Tissues morning tea on the first day.

When Monday 24 January 8.30am - 10am

Where Campus Heart

What Morning tea, tissues, and chats supplied

Who Everyone is welcome! It's a good catch up after the holidays and a comforting get to know you for new parents and carers. No RSVP required, just come and enjoy the new Campus Heart outdoor space.

M Block (P&C office, Uniform shop, & Years 5 & 6 classrooms)

P&C office (M01)

Opening Hours—Monday to Friday, 9am - 3pm

Uniform shop (M01)

Opening Hours

During holidays

Thursday 20 January & Friday 21 January, 8.30am - 12.30pm

Week 1

Monday 24 January & Tuesday 25 January, 8.30am - 12.30pm

Thursday 27 January, 1pm - 4pm

Week 2 onwards

Mondays, 8am - 9.30am

Thursdays, 2pm - 3.30pm



Year 5 students with Ms Couch exploring the new Year 6 classrooms in M Block

Year 5 visiting M Block's Years 5 & 6 classrooms



Year 5 students exploring a M Block classroom



Year 5 students, Ayami & Charlotte, testing the M Block classroom



Year 5 students exploring and testing the new Year 6 classrooms in M Block



We welcome new staff in 2022...

In 2022 WESS will employ 180 staff including teaching, administration, and cleaning staff. The community will welcome new teachers, teacher aides, and cleaners.

Introducing some of our new teachers in 2022



Alyce Ryan

"My name is Alyce Ryan. I'm coming from Grand Avenue State School and can't wait to join the WESS team in 2022! I'm really excited to engage with the students and implement exciting learning opportunities that enhance their creativity."



Sarah Rogers

"My name is Miss Rogers and I am really looking forward to joining the WESS community in 2022. I have had the pleasure of working in Emerald, Central Queensland, for the past 4.5 years where I have taught Years 2, 4 and 5. I am excited to be joining WESS and being a part of the educational experiences and extra-curricular activities!"



Johanna Bowman

"My name is Johanna Bowman and I have been teaching at WoodLinks State School in Collingwood Park for the last 6 years. I am thrilled to be joining West End State School next year, and am so looking forward to meeting the community and joining the children and their families on their learning journey for 2022. I cannot wait to see what exciting adventures are in store for us!"

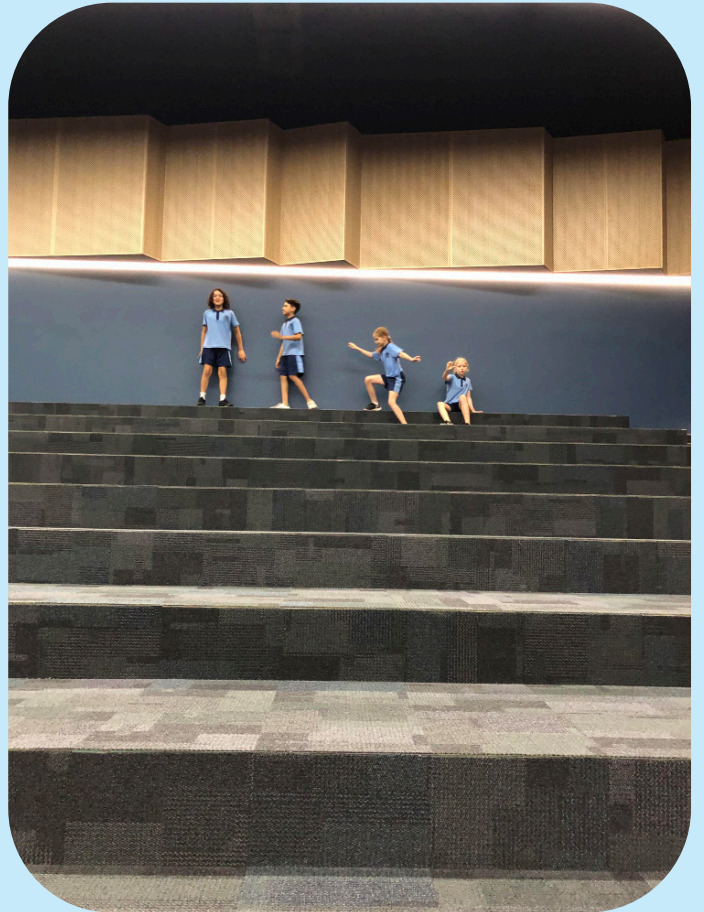


Students can't wait to meet them!

O Block (Performing Arts Centre PAC, music rooms, & tuckshop)



External view of the PAC



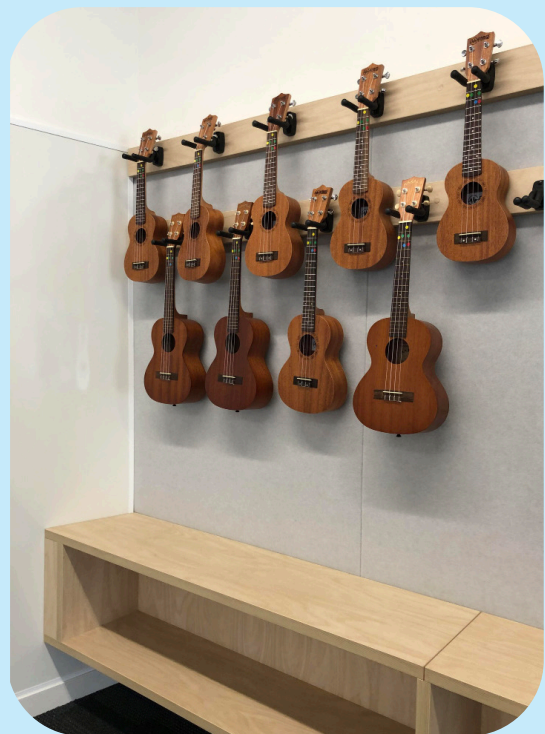
Year 5 students in the PAC



Year 5s testing some dance moves in the PAC



Music room in O Block



O Block's tuckshop



Commercial grade kitchen in the tuckshop



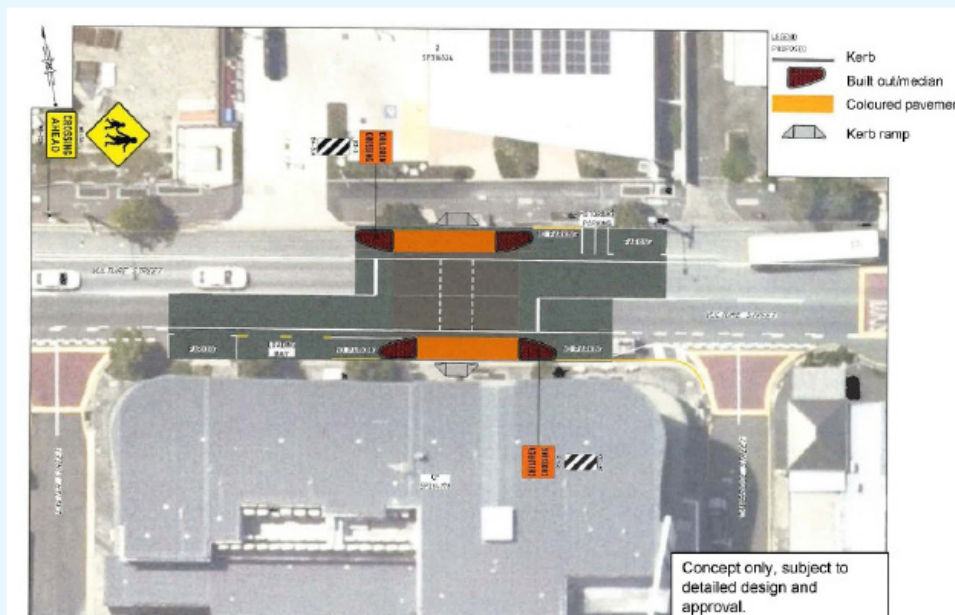
Tuckshop doors ready for students

Proposed school crossing

A new school crossing is proposed on Vulture Street, between Cambridge Street and Exeter Street—together with Brisbane City Council and the Department of Education, WESS is working to progress the required approvals.

Any questions, please contact the Department of Education at BuildingFutureSchools@qed.qld.gov.au

We hope this school crossing will ease safe active travelling (walking, riding, scooting) for our WESS community.



Outside spaces



Year 5 students, Quinn (back), Luda (middle), & Sonny (front), try the Nature Play area



Outside sinks in M Block



Swinging about in the Nature Play



Year 5's Luda in the Nature Play area

Ready for the 2022 school year?



Year 5 students, Hamadan & Cyrus, in the collaborative space in M Block, talk about the new year

Checklist to get ready for 2022

- Order your booklist (see westendss.eq.edu.au/enrolments/booklists)
- Name items that will be brought to school including uniforms, hats, water bottles, swimmers, towels, sun shirts, goggles, books, etc.
- Check your uniforms and order / buy the week before school (see wesspandc.org)
- Join Flexischools so you can order tuckshop (see wesspandc.org)
- Enrol in Outside School Hours Care (OSHC) if needed (see wesspandc.org)
- Check your email (including spam) on Friday 21 January for your student's class and teacher allocation



Year 5 students, Amelia, Nicola, Akshay & Victor, in the Campus Heart looking forward to seeing everyone in 2022!

Have a wonderful break!