



WESS

Building our Future

September 2021



In my acting principal role, I've enjoyed seeing the building site flourish. I'm grateful for the opportunity to contribute to decisions relating to the building works in these final stages. I have come to learn that during the planning process for the expansion that first began in 2018, the WESS values and historical aspects of existing heritage listed school buildings were incorporated into many of the design principles. This ensures a seamless integration of old and new.

Looking into the history of the school, WESS opened on 16 August, 1875 and at that time had 3 departments: a schoolroom for boys, another for girls, and the third for infants—educating 90 students, 30 in each room, all housed in a T-shaped wooden building, now known as E-block. The current administration block (A, B and C) was constructed in 1935, when enrolments numbered 280 boys, 262 girls, and 343 infants. We now have 1,275 students at WESS.

In an acknowledgement to the past, the brickwork in our new buildings was carefully matched to those from 1935. Three colour batches were used to replicate the heritage brickwork in the existing administration block throughout Stage 1 and Stage 2 of the expansion build.

Throughout the master planning process, one of the major priorities was to create play spaces to not only cater for the growing number of students, but to increase awareness for what nature in an inner-city school environment could look like and how this could benefit our students.

WESS values were used to develop a set of principles and methodology when designing and developing the play spaces. The WESS Master Plan has optimised all areas of the school grounds, with no wasted space and has been designed with a purpose—to ensure that learning could also be taken outside the classroom.

I trust that this newsletter will provide you with some insight into the additional play spaces incorporated into the Stage 2 design, including the new oval, nature play, and various other outdoor spaces that students will have access to in 2022.

I'm looking forward to seeing these areas develop as the year progresses. Based on the feedback from students, I know they too are looking forward to playing in these new areas.



WESS campus heart clock tower, showcasing the heritage brickwork style



Penny Couch, WESS Acting Principal

WESS Stage 2 aerial view artist impression



Stage 2 site facts

Building sites stack up the numbers...

- 14 different trades
- 15 apprentices
- ~63 workers on site at any one time
- 116 windows across M-block and N-block
- 2,415 square metres of grass for the new oval
- 3,000 cubic metres of concrete used in M-block and N-block

Building timeline

End 2021—M-block (4-storey learning building), N-block, & O-block

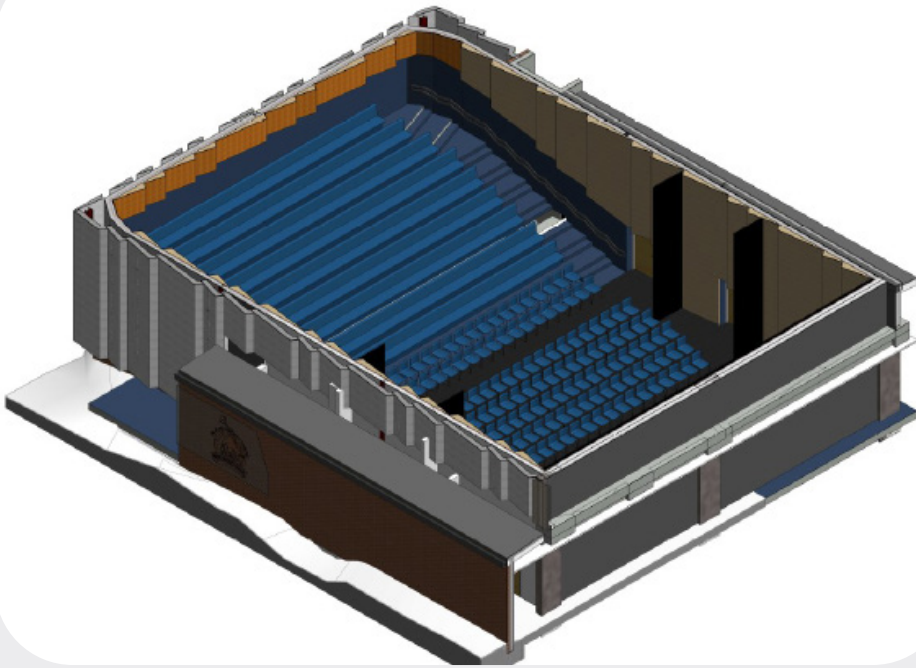
- 18 teaching rooms for Yr 5 & 6
- student services & staffroom
- second library
- playgrounds, including nature play
- O-block (Performing Arts Centre)
- carpark
- campus heart
- oval

New places to play

Early 2022

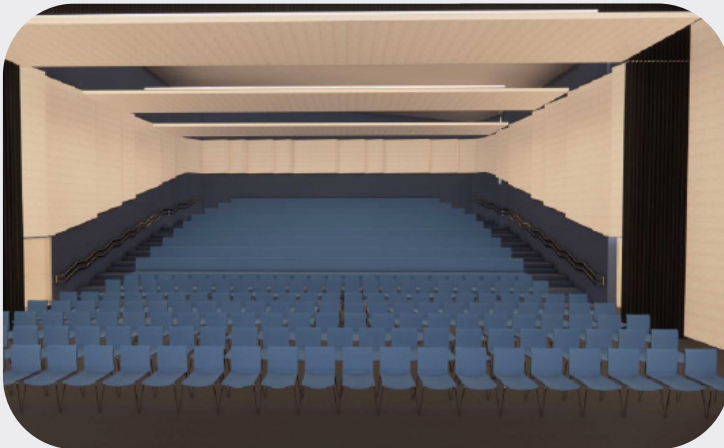
- 2,046sqm of new oval (in addition to 2,760sqm current oval)
- Play space adjacent to the new oval
- M-block undercroft
- N-block playgrounds (2 of them!)
- campus heart
- M-block nature play area
- M-block sandpit & adjacent playground
- N-block, library

O-block opening early 2022 ... Performing Arts Centre



Seating capacity of 396

Stage view



If you have any questions regarding the construction, please email the project team at BuildingFutureSchools@qed.qld.gov.au

Landscaping the outdoor play spaces

Shade, greenery, active and sensory spaces are planned for the campus heart landscaping.



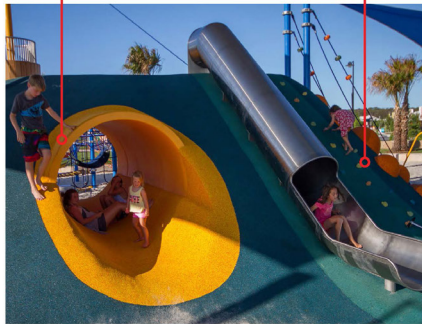
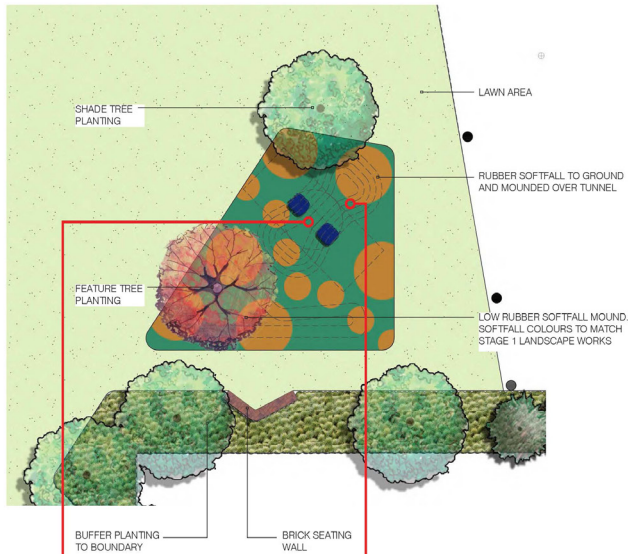
Angled fabric shade structures



Looking towards the PAC from L-block. Shade structures will be positioned over this area.

Landscaping the outdoor play spaces

OUTDOOR & NATURAL PLAY



TUNNEL THROUGH SOFTFALL MOUND

CLIMBING CLEATS
up one side of tunnel mound.



Rubber Jumping Domes

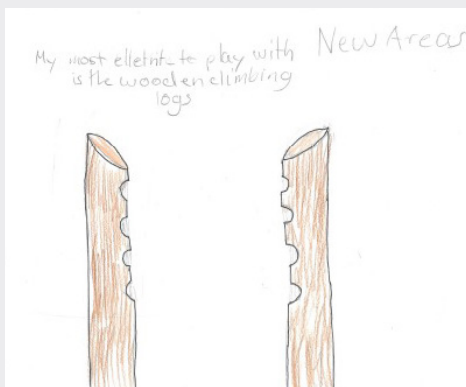


Rainbow Sambas

I look forward to playing the new drums,
you could actually make music! That
is really cool! ☆

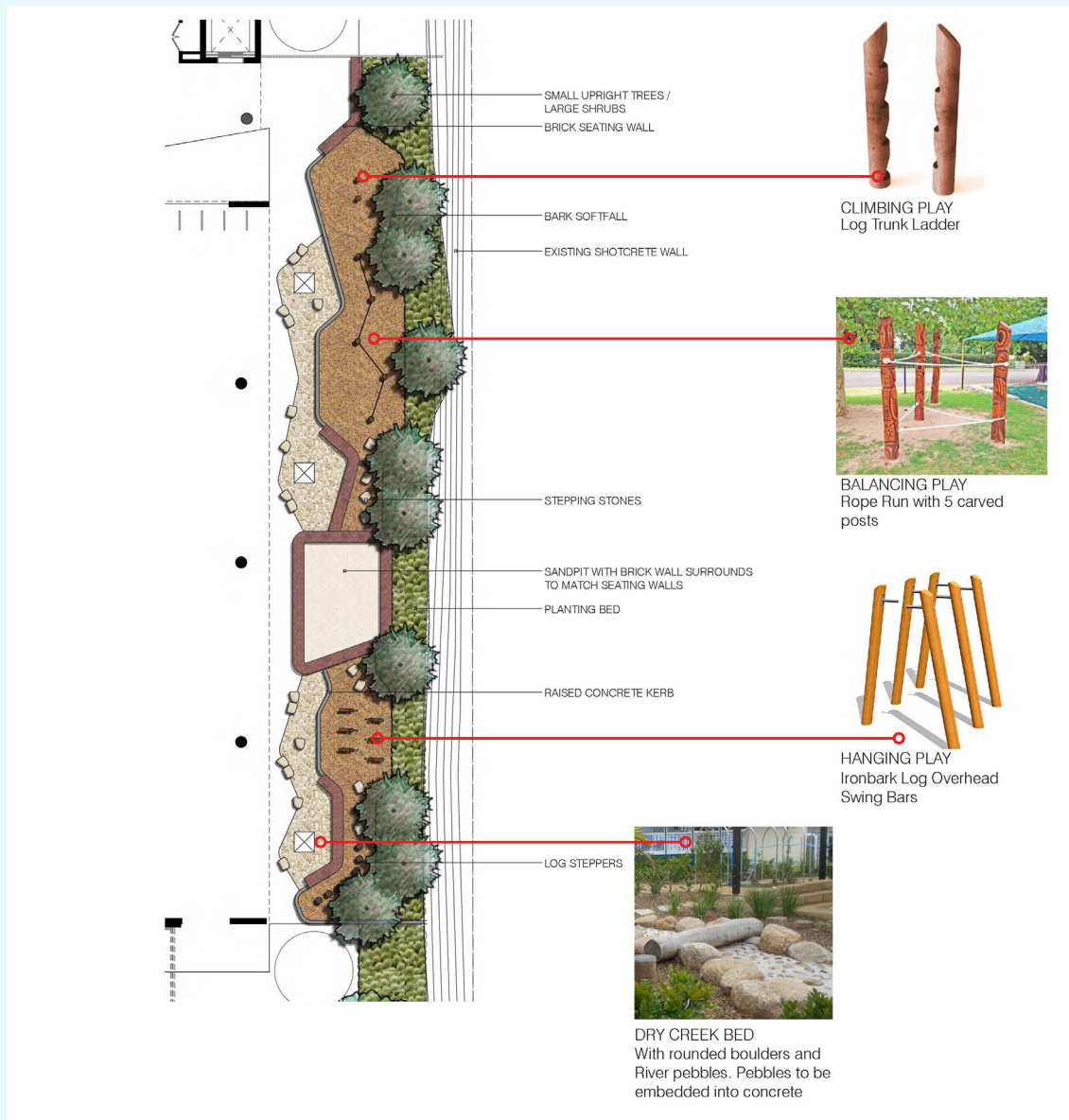
New Areas

4TP students on the new play spaces



Nature Play

WESS students gravitate to our green spaces and the popularity of the current nature play has inspired another nature play area alongside M-block.



Draft plan for the nature play alongside M-block



The new nature play area will include play equipment designed in Finland to encourage different climbs from different angles offering countless opportunities for play and aptly named the *Troll's Climbing Track*.

Play is key to Stage 2 design because ...



Can you name our libraries?

It's time we named our most beloved school areas—the libraries. With a new library set to open in N-block, and our current library in K-block, we think it's time we name them both, because *the library* doesn't work when we will have 2!

What would you like to see our libraries named? Email Kylie Jones, Business Manager, at kjone470@eq.edu.au with your suggestion.

Our K-block library is one of the most popular places in school. It is home to 27,631 books and last week alone more than 16,000 books were borrowed!

The second library, in N-block, will house a similar number of books and has a strong nature design including 2 large bookshelf trees and spaces for living plants.



Artist impression of the N-block library design