

# School's back

SLOW DOWN FOR SCHOOL ZONES



## Road safety reminders

### Road safety is everyone's responsibility

The Department of Transport and Main Roads (TMR) is committed to ensuring road safety around schools. As restrictions ease and all students are welcomed back to school, there will be an increase in traffic and pedestrian movement around your school, so driving safely around school zones will be even more important. Ensuring the safety of children travelling to and from school, walking or cycling, by school bus or private vehicle, is everyone's responsibility.

### Don't be hasty, think of your child's safety

Parents are being encouraged to use stop, drop and go (kiss and go) zones or similar facilities, when dropping their children at school. The daily drop off and pick up can be stressful, but it should always be safe. Ensuring children's safety in and around school zones and educating them on safe street practices, is a top priority. Parents are being encouraged to use these zones rather than walking their children into school. These zones are in place so a vehicle can stop for a short period of time to drop off or to collect children, moving on immediately to allow other drivers to use the zone.



When used correctly, the drop and go zones are very safe and effective, helping reduce traffic congestion around schools. **Remember:**

- **Queue** and stay in your car
- **Wait** until your children arrive - **ensure** seat belts are secure, then leave the zone safely.
- It is a **2-minute loading zone** – if your children are not able to be loaded within two minutes, drive out of the zone and re-join the queue.
- **Move** out of the zone if you do not wish to re-join the queue and find a park elsewhere.
- Be **considerate** and do not **overstay** your time in the zone.

### School zones and speed limits

Reduced speed limits apply to school zones and areas around schools during drop off and pick-up times. There may be some unsupervised children around school zones who don't always understand or recognise the danger of roads and vehicles. Take care when travelling in and through school zones. **Don't be naughty, check you're doing 40.**

### Children's crossings and School Crossing Supervisors

A familiar sight around schools is the School Crossing Supervisor. They ensure students and pedestrians who cross the road at the school crossing do so in a safe manner. They use a hand-held 'stop' sign to stop traffic and allow pedestrians to cross the road safely. Motorists must stop and wait until all pedestrians are no longer on the road and the School Crossing Supervisor has safely returned to the footpath. When children's crossing flags are displayed, you must stop and give way to any pedestrians on or entering the crossing (regardless of whether a school crossing supervisor is present or not).



## Walking and cycling to school to avoid congestion

As all children are returning to school, many people may wish to make the most of the active lifestyle we've become used to during lockdown and try walking or cycling to school. Motorists should continue to be extra vigilant around schools.

## Walking together to and from school

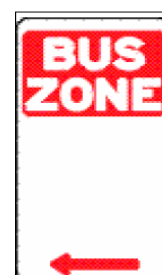
Plan your trip to school so you are using pedestrian crossing areas where possible. Always hold your child's hand up until the age of eight. Young children need your help to spot danger, like vehicles coming out of driveways. They can be easily distracted and wander into traffic. Calling your children from across the road for them to come to you is an unsafe practice.

Talk to your children about **Stop, Look, Listen and Think** every time they cross the road:

- **Stop** one step back from the kerb
- **Look** continuously both ways
- **Listen** for the sounds of approaching traffic
- **Think** whether it is safe to cross and keep checking until safely across

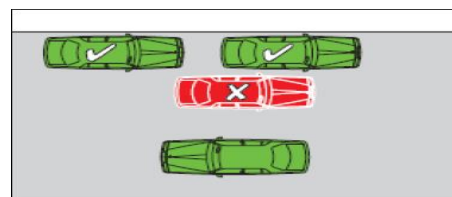
## Bus stops/Bus zones

Unless you are driving a bus (seating more than 12 adults including the driver) you must not stop a vehicle in a bus stop or bus zone. A driver must not stop within 20m before and 10m after a bus stop, to ensure buses have enough room to enter and exit the bus stop.



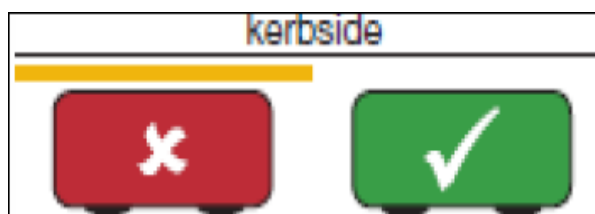
## Double parking

A driver must not stop a vehicle between the centre of the road and another vehicle that is parked at the side of a road, this includes vehicles parked in marked angle parking bays. This rule helps to prevent children from crossing between vehicles where there is a high risk of a collision occurring.



## Yellow lines

A driver must not stop a vehicle at the side of a road marked with a continuous yellow line. Usually these lines are placed in areas where safety is paramount, such as near marked crossings, on road corners or to ensure safe visibility for vehicles entering or exiting a property.



## Disability Parking Signs

Only vehicles correctly displaying a current disability parking permit can legally park in a disability parking bay. Disability parking permits are granted to persons when their ability to walk is severely restricted by a medical condition or disability.

## Parking a vehicle on a footpath/nature strip

It is an offence to park a vehicle on a footpath, dividing strip or nature strip. Parking on the footpath creates an unacceptable hazard for pedestrians. Vehicles driving across footpaths and nature strips create a higher risk of collision with pedestrians, especially smaller children who are harder to see.

**REMEMBER – SAFE PARKING MAY SAVE A LIFE**

For more information, contact your local TMR Road Safety Officer.