



WESS

Building our Future

June 2020



There are moments when hard work pays off exponentially—when the thousands of conversations, updates, and considerations reveal themselves in something you are truly proud of. I'm lucky that I get to witness that reveal. Last Friday I showed the first group of people through the new expansion building. Until then, only the project management team had been onsite. The tour group included our Prep, Year 1, and librarian teaching team and I am pleased to say they are as excited and in awe of the new space as I'd hoped they would be. I cannot wait for you to see it and when we are able, we will hold some tours—until then, please enjoy the photos of the expansion building in this BOF.

I am also very happy to tell you that the build is ahead of schedule! At this stage, our Preps and Year 1s will move to the expansion building before the end of Term 3! I will treasure that moment! When we see our early years' students enjoying their new space, we will be repaid for the many decisions we've had to make to bring this expansion to reality. Everything in the new building is by design—we've left nothing to chance!



Kim McNamara, WESS Principal



Our expansion at sunrise!

The expansion

Stage 1 is nearing completion and nearly ready to welcome our Preps and Year 1s before the end of Term 3.



Aerial view of Stage 1



Stage 1 plan of classrooms



Cross cut of Stage 1

What changed over the years

Over the years we've modified and improved the design of the expansion site to give the students more undercover and outdoor play areas, greater flexibility in the learning spaces, and greater free-flowing movement. Our mantra has been to build to the edge and build higher to allow for undercroft play spaces. The evolution includes:

- 1,170sqm of undercroft, covered play space under all expansion buildings.
- Sliding walls in all classrooms, and from the collaborative spaces to the covered outdoor project space. When all doors are open there will be 800sqm of space available for flexible learning over the two levels.
- Large windows in all classrooms.
- Ducted air-conditioning and heating as well as ceiling fans.
- Tiered seating area for covered, outdoor learning.
- Teaching walls in all classrooms freeing up floor space.
- A theatre auditorium with dedicated art, music, and drama space (Stage 2).
- A motorised gate for emergency services' access to Horan Street.
- A slide (thank you P&C!) for active kids!



Site tour

Last Friday, Prep and Year 1 teachers checked out their new learning spaces. They were pleased at how well their feedback was incorporated into the design.



Ms Heron impressed with the space in the expansion building



Mrs Wallace making sure there's enough storage space



Outdoor slide!



Miss Ford and Miss Dawe liking the teaching wall



Ms Lilly and Ms Heron testing the bifold doors

Site tour

Prep and Year 1 teachers checked out their new learning areas.



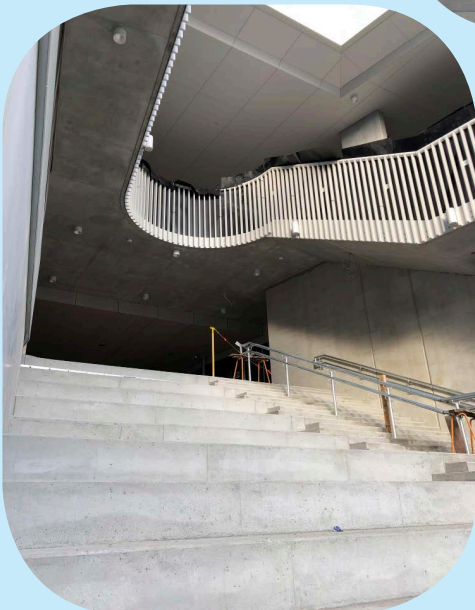
Mrs Carr and Mrs McNamara checking out the collaborative space looking onto the outdoor project space.



Miss Kelly marvelling at the generous proportions.



Mrs Semple pondering the view.



Tiered seats - another learning space.



Mrs Adams and Mrs Carr liking the view of the existing school.

Walkway inspiration

The campus heart, Horan Street, will tie the expansion building with our existing site and the WESS Values will link both.

We are using the WESS Values colour tiles as inspiration for the artwork that will link our school buildings.



A parent's perspective

Last week I was lucky to get a sneak peek of the expansion site and watch the teaching team from Prep and Year 1 explore the site. I work with the school to bring you this newsletter every term; I've seen the plans and designs, but I still wasn't prepared for the space, light, and flexibility of the expansion building. It's massive! A whole floor for each year level... a year level all in one space where teachers and students can collaborate, learn, chat, and play. No more squeezing past trying to put schoolbags on racks and cram a goodbye while trying to get out of others' way ... there is space—well thought-out, easily navigated, flexible space.

What excited me more than the space, was the teachers' enthusiasm and inspired talk of how they would use it—how they could incorporate the outside project space for certain lessons; how the classroom sliding walls could be opened up, along with the collaborative space sliding walls to make a gigantic full-year interactive space ... art class on a whole other level; how the tiered seating would be great for Book Week guest author talks; how the undercroft area might be used for mindfulness and stories after lunch; and how learning could cover the teaching wall while materials would be housed within it.

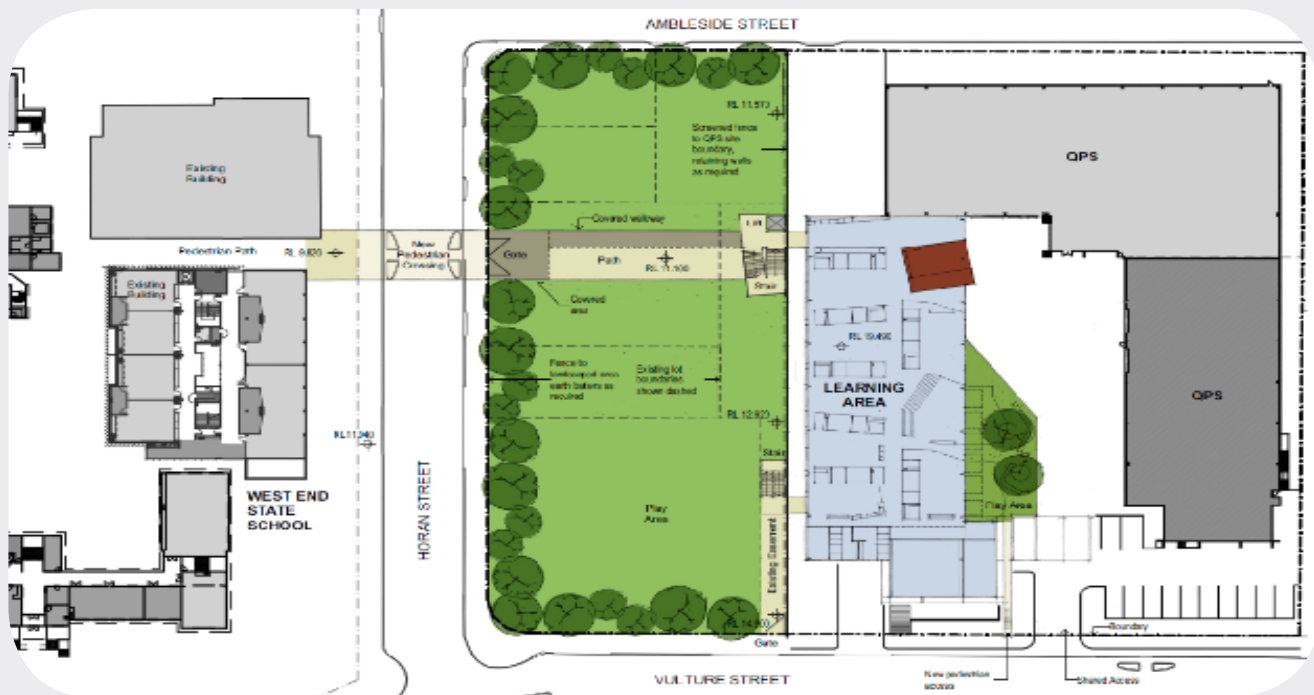
It all made me want to go back to school! The learning spaces, the flexibility of the design, the fact that everything sounds fun ... and all that with the furnishings yet to come. So, next question, am I too old to enrol?!



Kristina, parent to Amelia in Year 4 and Louisa in Year 1.

Previous plans

First iteration: 2018 refurbishing the police warehouses!



When the police warehouses were going to be refurbished

Previous plans

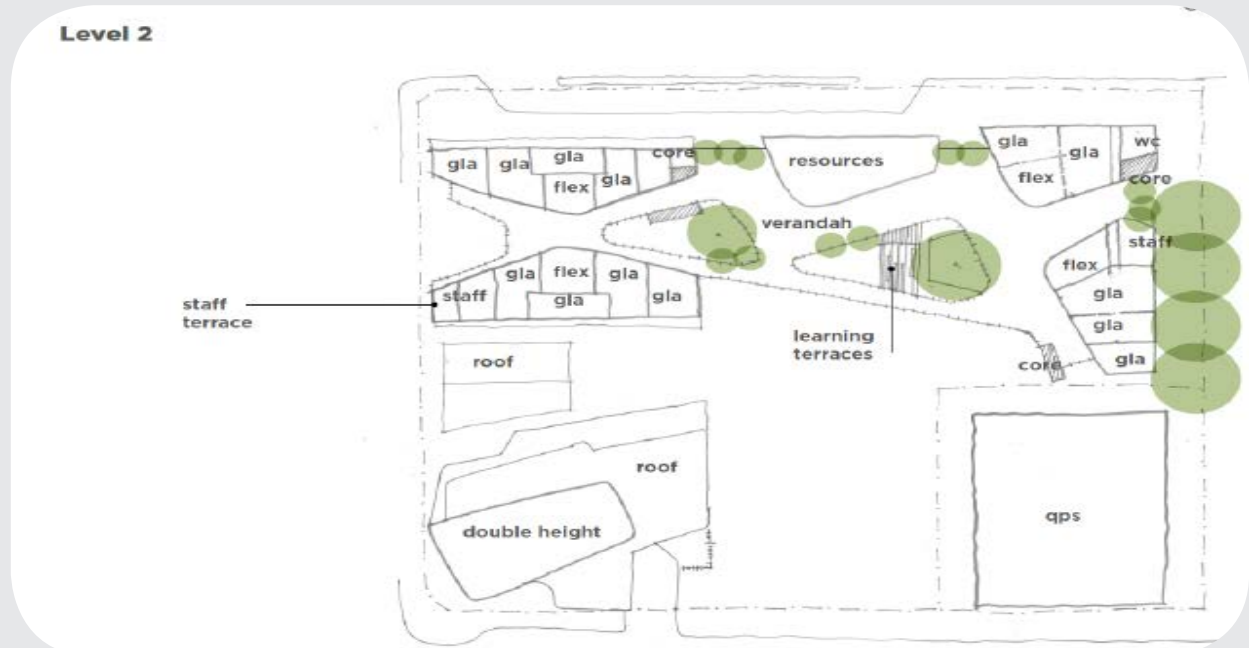
Next iteration (March 2019).



If you have any questions regarding the construction, please email the project team at BuildingFutureSchools@ged.qld.gov.au

Previous plans

Next iteration (March 2019).

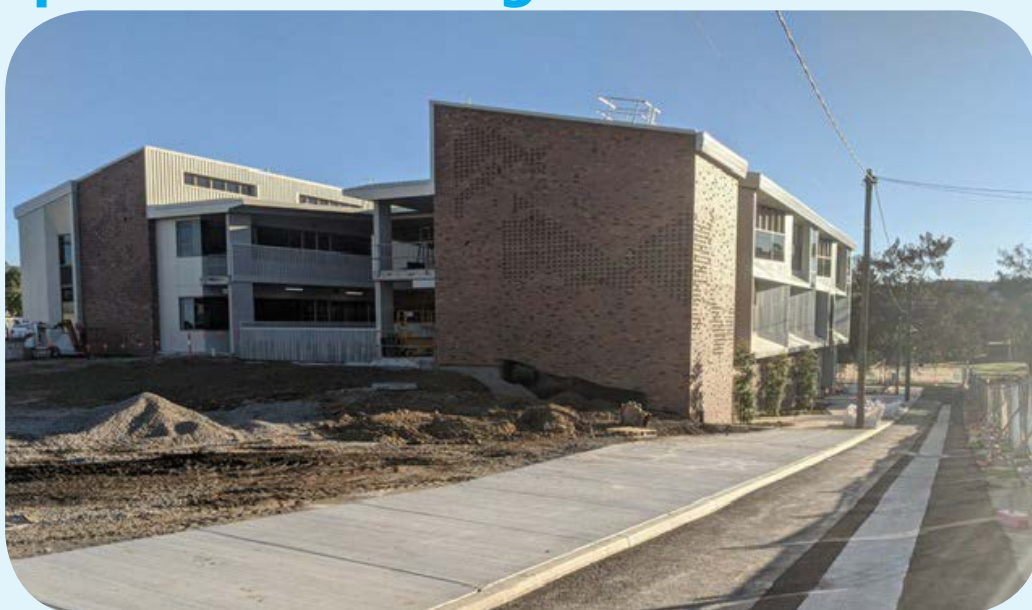


The final iteration of the expansion site

The expansion site with Stage 1 (including Stage 2).



The expansion building



Timeline (health restrictions permitting)

Term 3

North end Horan Street fence completed and road sealed off from construction and general traffic.

Late Term 3

Prep and Year 1 classes move to the new 3-storey learning centre in the expansion building.

Ambleside Street pick-up/drop-off zone in operation.

Late Term 3 / early Term 4

School community tours of the expansion building (restrictions allowing).

School Council, P&C, and parent / carer tours of the expansion building.

Late 2020 / early 2021

Stage 2 build commences.

By Term 1, 2022

Construction completed of Stage 2 including the 4-storey learning centre plus administration building and library.

Years 5 and Year 6 classes move to the new 4-storey learning centre.

Mid 2022

Campus heart ready.

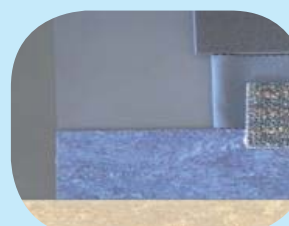
Performing Arts Centre including music areas, the auditorium, and canteen completed.

44-space car park opens for staff.

*Building Future Schools Departmental website updates information fortnightly.

Furniture design

The furniture chosen for the Prep and Year 1 classrooms.



Prep level colour scheme



Year 1 level colour scheme

Expansion Stage 1 close to completion



Keeping our expansion safe

Now Stage 1 is nearing completion, the security of the building over the school holidays will be bolstered with CCTV on external walls and looking at the building entries from the undercroft.

The Department of Education Security has reviewed the site and building design and is rolling out CCTV use as a security measure after hours. The cameras will be installed over the school holiday and will be used as an added tool to ensure the site is secure and safe at all times.

The CCTV is an after-hours and school holiday security measure to make sure that when we're not learning, other people aren't accessing our expansion site.



If you have any questions regarding the construction, please email the project team at BuildingFutureSchools@qed.qld.gov.au