



# WESS

## Building our Future

September 2020



WOW! How wonderful it has been to finally see L-block filled with our Preps and Year 1 students! We have filled the rooms with learning minds and active bodies and it is a joy to see everyone making the space their own. Our other year groups are also enjoying the undercroft space for PE and other activities. We can see how sticking to our mantra of *build to the edge and build up* has given us a wonderful, covered space for all the school to enjoy. Make sure you watch our video about L-block on the West End State School YouTube channel. COVID-19 has curbed our in-person tours, but thanks to some very talented parents you can still experience it. Also look out for a Department of Education commercial on recruiting new teachers as you will see our new building features in the opening and closing shots.

As our numbers reach 1231 students and term 4 is not far away, our attention turns to planning for 2021. We have started to think about which year levels will be where, keeping in mind the completion of Stage 2 which should be ready for the 2022 school year. We are excited for Stage 2 and will find out who will build the next stage of our expansion before the end of this year, with construction starting in early 2021. Watch this space for that announcement.

It has been yet another big term and I want to thank you all for your support of the team at WESS. It has been wonderful to finish the term with the sports days which provided the students with a great opportunity to display our school values.



Have a fabulous holiday and I look forward to seeing you all back at school on Tuesday 6th October.

**Kim McNamara, WESS Principal**

### 2021 Plans

Prep & Yr 1 in L-block  
Yr 2 in C-block & T-block  
Yr 3 in J-block  
Yr 4 in K-block & C-block  
Yr 5 & 6 in F/G/K-block & T-block and in 2022 in the new building M-block  
OSHC in D-block (old Prep area)  
Learning support & EALD in E-block (old Yr1 area)



Our students enjoying the community of L-block

# Stage 2 timeline

**November 2020** - building tender for Stage 2 awarded

**Early 2021** - Stage 2a - 4-storey learning centre (M-block) construction starts

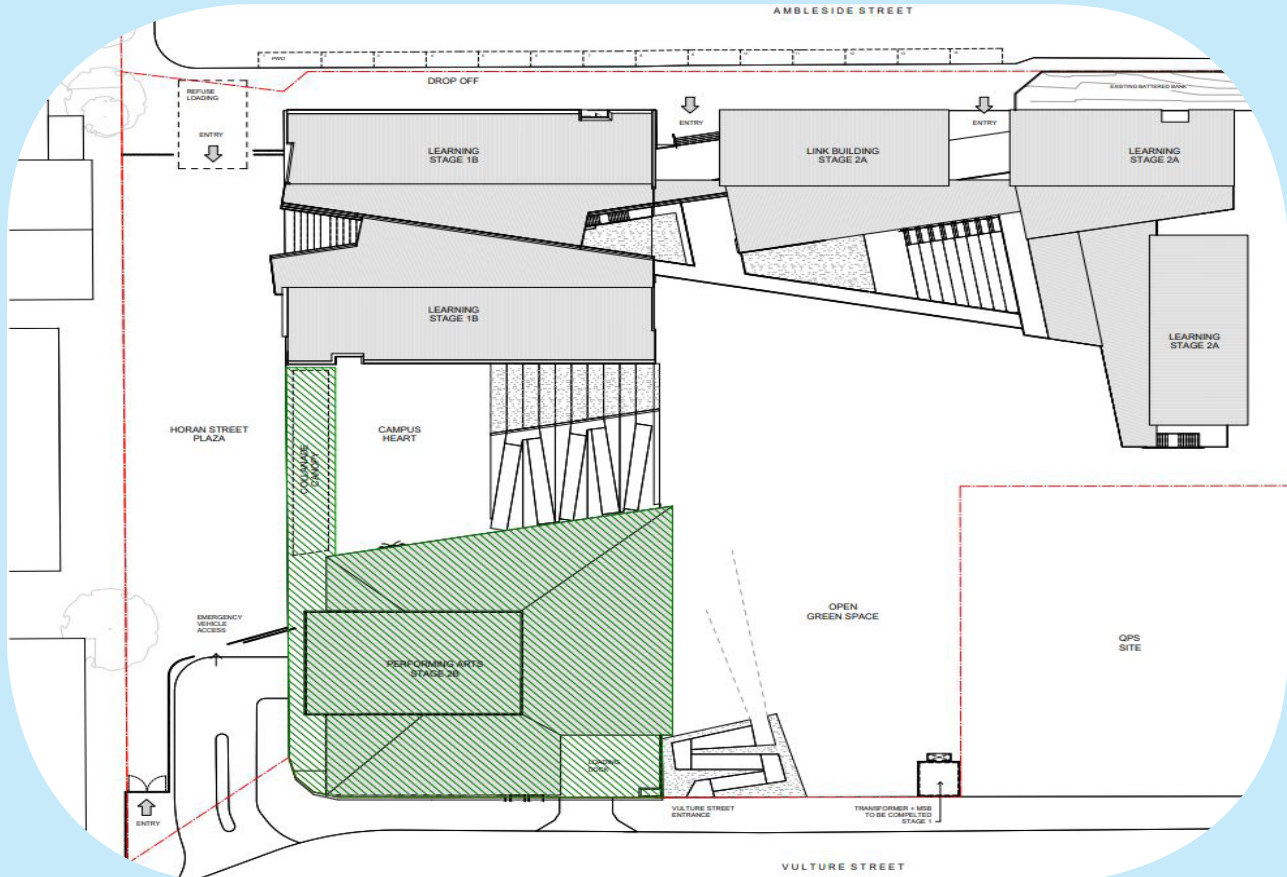
**2021** - Stage 2a - the administration and library link building construction starts

**2021** - Stage 2b - the Performing Arts Centre construction starts

**Late 2021** - Stage 2a - M-block, the administration and library link building completed

**2022** - Yr 5 and Yr 6 start the year in M-block

**Mid-2022** - Stage 2b - the Performing Arts Centre completed.



Stage 2a and 2b



L-block by 1BF's Poppy and 1LW's Chelsea



L-block



## Dust & noise

Our WESS Expansion Project Manager, Melissa Braun, explains how we will keep L-block learning comfortable when construction of Stage 2 starts.

*When Stage 2 construction starts in early 2021 our attention will again turn to how we can suppress excess construction dust and minimise noise. Once our Stage 2 builders are appointed, we will work with them to do this. Part of the process is looking at dust and noise, how to minimise these and how to ensure safety in an operational school site. For example, no machinery operating within 5 metres of the L-block play area during school hours.*

*L-block currently has temporary solid walls at the ends of the corridor next to the construction site to limit dust and noise in the classrooms. Eventually, this corridor will open up and link L-block to the new Yr 5 and Yr 6 classrooms, M-block.*

*Extra measures may include*

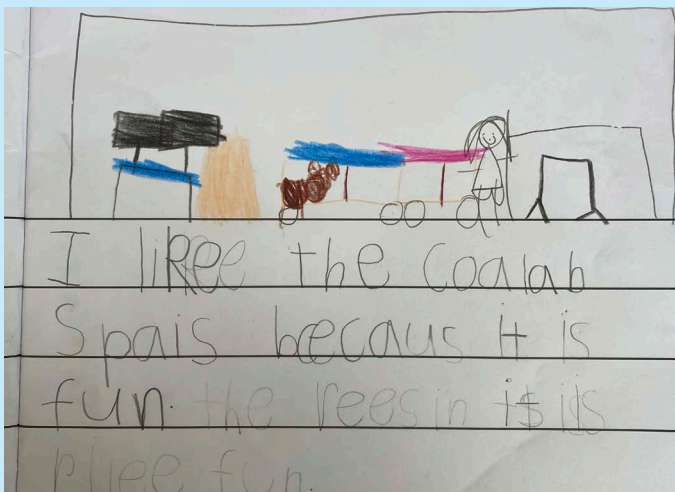
- Dampening down dust during earthworks
- Noise barriers on each level of the M-block scaffolding
- Using air-conditioning in L-block so that windows and doors can remain closed if conditions require.

*Our priority is for our Prep and Yr 1 students to come to school everyday to a comfortable learning environment not negatively impacted by excess dust or noise.*

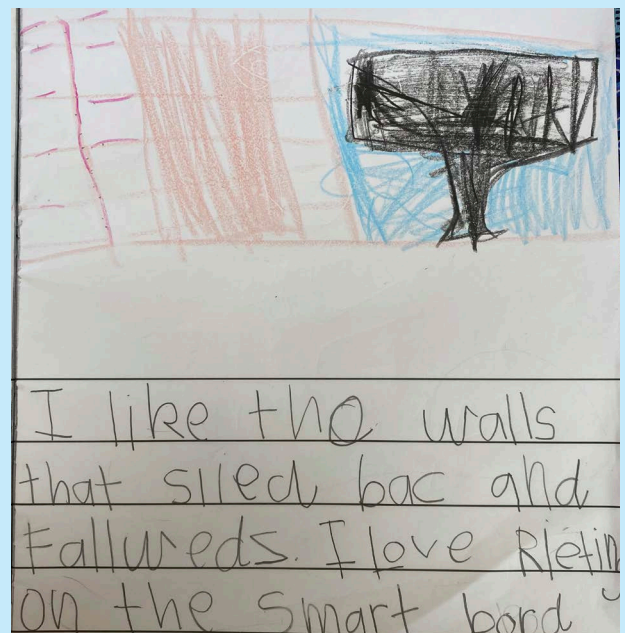


WESS Expansion Project Manager, Melissa Braun

## Student perspectives



Wombats student, Sierra

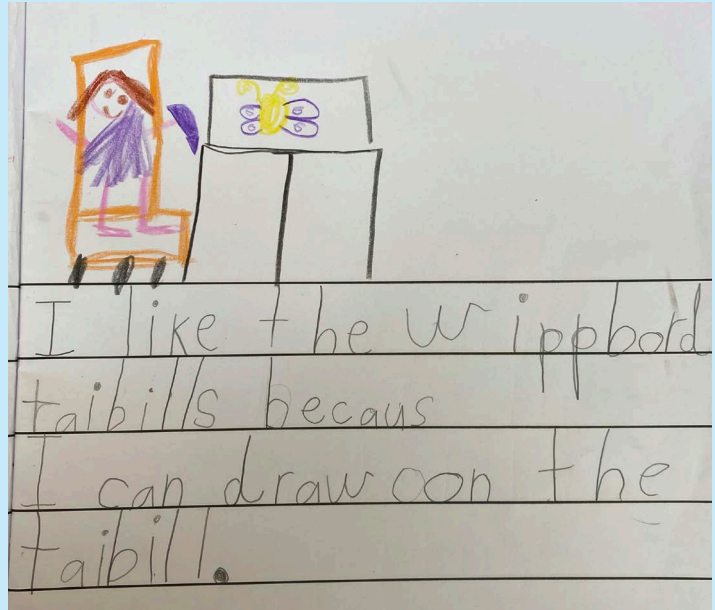


Wombats student, Rho

# What do our students think about L-block?



Yr 1 students, Ines & Louisa, sharing their stories



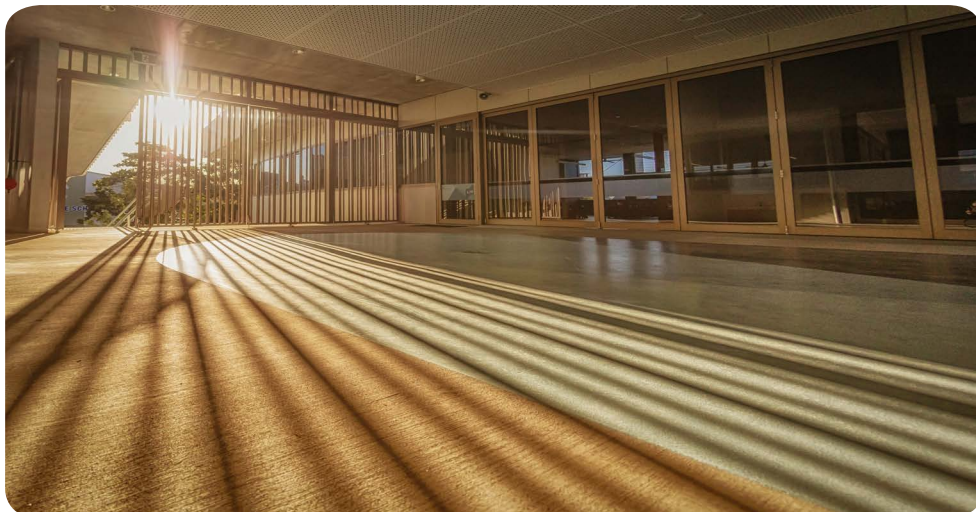
Wombats student, Lara



Wombats student, Ava



Yr 1 students, Ines & Louisa, enjoying the reading corner





# P&C announces an end to OSHC waitlist in 2021!

While COVID-19 has curtailed many activities in 2020 and caused much angst, the WESS P&C is happy to give the WESS community some good news! WESS P&C is on track to eliminating the Outside School Hours Care (OSHC) waitlist in 2021. It is expecting approval for increased numbers will come through next term—initially increasing capacity to 250 students and then to 300 students.

P&C President, Donovan Marsh, doesn't expect OSHC will hit full capacity of 300 for a further year or two.

"We know 2020 has been rough, but we want WESS families to know that OSHC will be ready to care for students when parents and carers need to work, re-train, or study," Donovan said.

The increase in capacity is thanks to the school who will offer OSHC D-block (the old Prep classrooms) from Term 4 this year.

P&C news:

- The OSHC business has grown from 65 children to 215 children, and has had a waitlist since 2013. We now employ more than 25 staff in OSHC and across the broader P&C, 40 staff. We have recently expanded our office to give our staff the space to plan and undertake all of the administration behind-the-scenes work.
- Funding a new uniform shop and P&C office in Stage 2.
- Funding the fit-out of a new kitchen in Stage 2's Performing Arts Centre. This will generate revenue for the P&C when the centre is rented out for community use.

*As the school grows, so does the need for P&C services. We need more OSHC space, more food in the tuckshop, there is more demand for the swim school, we need to buy, store, and sell more uniforms, and we need to manage all of these businesses. That is what the P&C does for you ... that is why we always welcome your involvement—one-off or ongoing, small or large—it all helps, we value it all! Come and play a larger role in your child's education and make new friends. Our meetings are held the 2nd Tuesday of the month—say hi.*



P&C President, Donovan Marsh, parent to WESS students, Eva Yr 6 & Leo Yr 4

## Calling all creatives

Are you one of our West End creatives? We want to acknowledge and celebrate the creativity and artistry of the West End community. We are looking for art for our school—sculptures for Dirram Yani, tiled mosaics, large-scale artworks, and more.

Promote your artwork at WESS and we will acknowledge your donation with a plaque, promotion in our newsletters, and an outpouring of thanks! Your contribution will also help us foster a love of art and creativity among our students!

Please send your expression of interest to the Creativity Professional Learning Committee care of Jenny Smith at [jsmit68@eq.edu.au](mailto:jsmit68@eq.edu.au)

If you're not one of our creatives, you can also help us by donating plants for our classrooms. We are on a mission to green up our classrooms and bring the outdoors in to celebrate Spring. Please contact the office or classroom teacher if you have any donations.



## 1TF's L-block poem

Our brand new building is so special,  
it's here to help us learn.

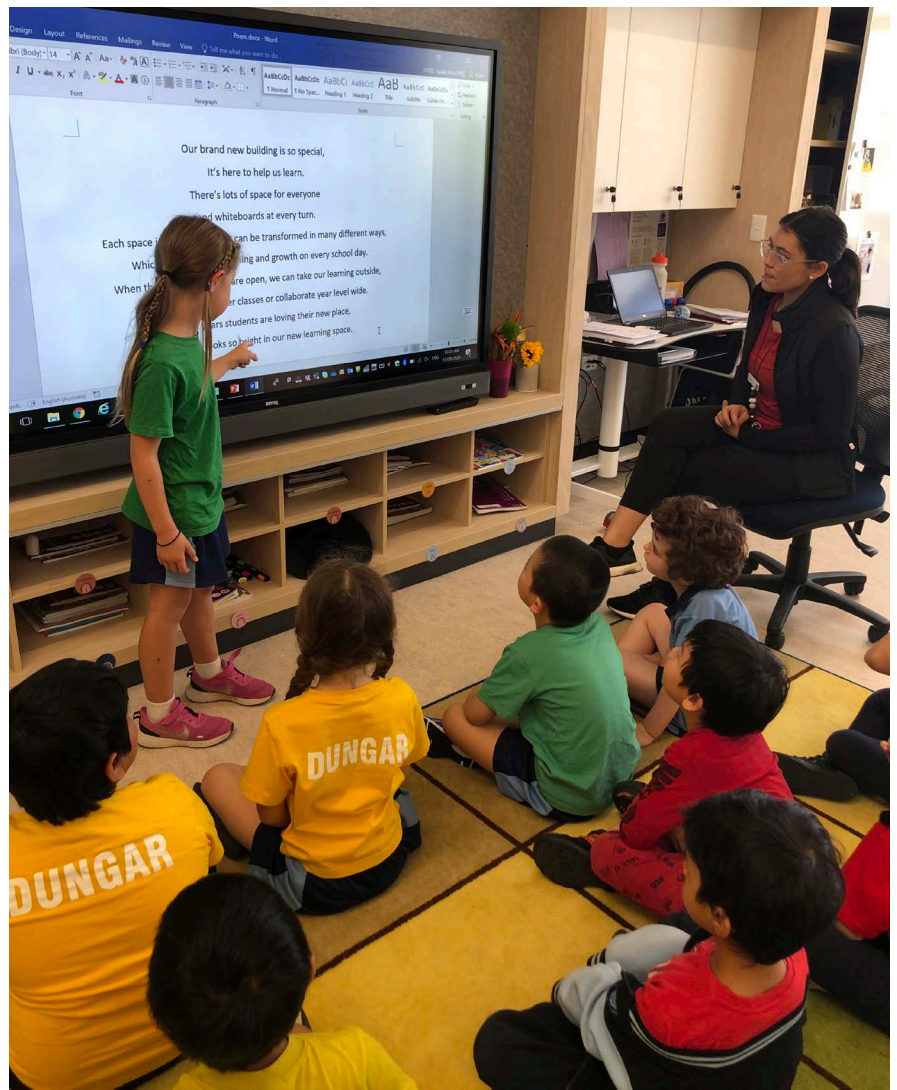
There's lots of space for everyone  
and whiteboards at every turn.

Each space inside the building can be  
transformed in many ways,  
which will guide our learning and growth  
on every school day.

When the classroom doors are open, we  
can take our learning outside,  
we can work with other classes or  
collaborate year level wide.

Our early years students are loving their  
new place,  
the future looks so bright in our new  
learning space.

1TF working on their class poem



If you have any questions regarding the construction, please email the project team at [BuildingFutureSchools@qed.qld.gov.au](mailto:BuildingFutureSchools@qed.qld.gov.au)